



Quarter 2 Start Up

November 16th 2020

Q2 Schedule

Q2 November 16th to January 29th

First Half: *November 16th to December 18th*

B Monday - Friday

D Odd/Even

Second Half: *January 4th to January 29th*

B Odd/Even

D Monday - Friday

B Block Monday - Thursday: 9:00 - 11:30

Friday 9:00 - 10:40

E Block/Lunch 11:30 - 12:25

D Block: 12:30 - 3:00

B Block Odd/Even: 9:00 - 11:30

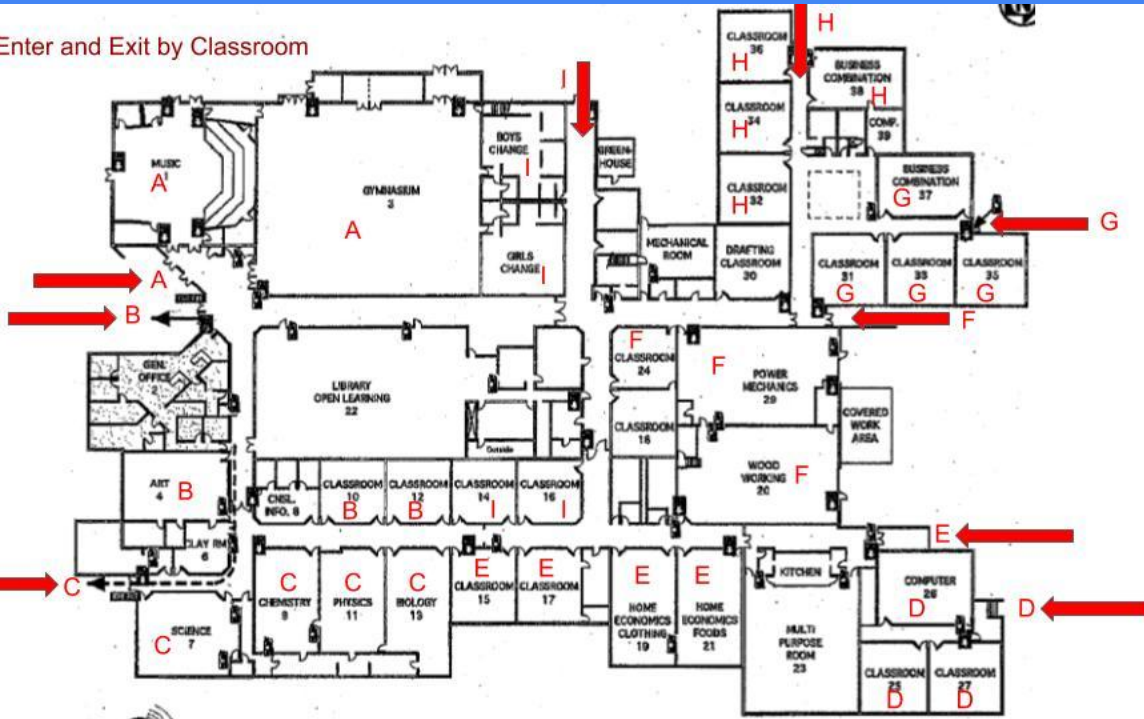
E Block/Lunch 11:30 - 12:25

D Block Monday-Thursday: 12:30 - 3:00

Friday 11:45 - 1:05

Designated Entrances

Enter and Exit by Classroom



Use the washroom nearest your classroom

COVID-19 Safety Protocols

[Student Slide Show](#)

[Daily Health Check](#)

Masks in common areas!



Lunch/E Block

All students without classes in the afternoon leave school immediately after first period (B block).

Students with E block Classes or are present in the D block:

- Go home for lunch if you do not have an E block class
- Eat outside
- Gym and Hallways Unavailable for Lunch/Eating
- E block students can eat outside or go to their classroom
- Limited indoor spaces will be made available when weather worsens

Inclement Weather Lunch Rooms

- The following rooms are available for eating lunch during inclement weather days for the first half of quarter 2:
- Rooms 9, 12, 16, 25, 30, 35, Multi-Purpose Room (MPR)

Max 15 students in classrooms and 30 in MPR

Clean up and disinfect when leaving

Bathrooms

Limited number of students

2 Students at a time. Return to class if it is full and try again later

Spray Bottles to disinfect after use

Assigned bathrooms by class groupings

Alternating Afternoon Classes - D Block Q2

Students Last Names A-L will have D block on even calendar days

- Monday November 16th
- Wednesday November 18th
- Tuesday November 24th
- Thursday November 26th
- Monday November 30th
- Wednesday December 2nd
- Tuesday December 8th
- Thursday December 10th
- Monday December 14th
- Wednesday December 16th

Students Last Names M-Z will have D block on odd calendar days

- Tuesday November 17th
- Thursday November 19th
- Monday November 23rd
- Wednesday November 25th
- Tuesday December 1st
- Thursday December 3rd
- **Monday December 7: No School Pro-D Day**
- Wednesday December 9th
- Tuesday December 15th
- Thursday December 17th

No alternating classes on Fridays!

Some classes may be dividing using an alternate alphabetical designation in order to have a more balanced split.

Students may not change their alternating class unless arrangements have been made with the classroom teacher and Administration.

Alternating Morning Classes - B Block Q2

Students Last Names A-L will have D block on even calendar days

- Monday January 4th
- Wednesday January 6th
- Tuesday January 12
- Thursday January 14
- Monday January 18th
- Wednesday January 20
- Tuesday January 26th
- Thursday January 28th

Students Last Names M-Z will have D block on odd calendar days

- Tuesday January 5th
- Thursday January 7th
- Monday January 11th
- Wednesday January 13th
- Tuesday January 19th
- Thursday January 21st
- Monday January 25th
- Wednesday January 27th

No alternating classes on Fridays!

Some classes may be dividing using an alternate alphabetical designation in order to have a more balanced split.

Students may not change their alternating class unless arrangements have been made with the classroom teacher and Administration.