



# Lambrick Park Secondary School

4139 Torquay Drive, Victoria, B.C. V8N L1

*Gord Mitchell, Principal*

*Nancy Archer, Vice Principal*

*Barry Janzen, Vice Principal*

Please remind your kids to conduct the [DAILY HEALTH CHECKLIST](#) before coming to school each day, and to stay home if they are not feeling well.

**Students should continue to follow the Health Guidelines at school & in the community**

**Please remind your student to bring a mask and a backup every day**

---

LP MUSICAL THEATRE Presents:

[SHREK! The Musical](#)

March 1 – 5, 2021 – Live Stream Performances @6:30

Tickets are on sale now!

---

## **Booking has started for Parent / Teacher conferences through to noon March 4** **SCHOOL APPOINTMENTS**

- March 01 – 05 - LP Musical Theatre Presents: [SHREK! The Musical](#)  
March 03 - LP [FAMILY PIZZA NIGHT](#) [LP Family Pizza Night March 3](#)  
March 03 - LAMPAC zoom at 7:00 pm  
<https://gvsd61.zoom.us/j/65926865489?pwd=SIJ1T2xZOExkS3A2QkxuK3VENjgzZz09>  
March 05 - Parent/Teacher conferences – 11:30 – 1:30  
March 08 - Quarter 3 Block Rotation – C am / A pm  
Students will need to continue to come in the morning each day, but they will start each day in their C block class. Their A block class will become their alternating afternoon class.

[Lambrick Park School Daily Announcements](#) and other important information.

---

LP Families:

There are some updates to the Public Health orders. The specific update that pertains to parents is:

If you need to enter the building:

- please wear a mask
- sanitize your hands upon entry
- sign the visitor log in book
- acknowledge you have completed a Daily Health Check
- leave your contact info and time of entry and exit

The new COVID regulations that impact our students are in PE and Music and were shared in previous weekly updates.

### **STUDENT LEARNING SURVEY 2020/2021**

Parents of students in Grades 10 and 12 are asked to take a few minutes and complete a survey developed by the Ministry of Education. Your responses help the school, the district, and the ministry get a parents perspective about Lambrick. Please take some time and complete the survey before April 30, 2021.

The survey can be completed electronically and can be accessed on the Internet at

[http://www.bced.gov.bc.ca/sat\\_survey](http://www.bced.gov.bc.ca/sat_survey). Any computer with an Internet connection can be used, and access to the e-survey is simple and secure. The survey can be accessed through the link with or without an anonymous logon code by selecting the school district and school name where your child attends school. Provincial, District and School Reports for previous years can be viewed at the same site under the *Results* section.

# MARK YOUR CALENDAR!

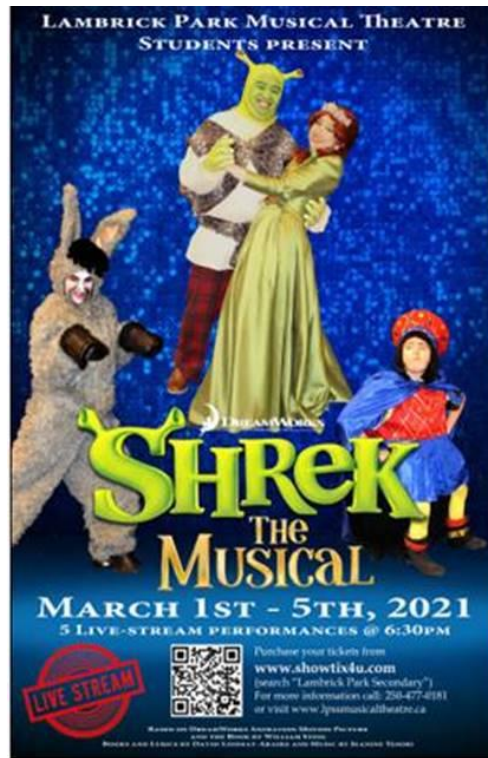
## SHREK The musical

Monday March 1 – Friday March 5

Live Stream performance by Lambrick Park students!

Purchase your tickets at:

## SHREK showtix4u



## FAMILY PIZZA NIGHT

Wednesday March 3, 2021

proceeds from your order will help support LP Musical Theatre!

DOMINO'S Pizza in Victoria

Pre-order (using order codes Option A 53300 or Option B 53301)  
for delivery or pick up!

WEDNESDAY MARCH 3, 2021

**FAMILY PIZZA NIGHT**

LAMBRICK PARK SECONDARY SCHOOL

Order **ONLINE** one of the specials outlined below and your school will receive a \$5.00 contribution for each order.

<b>OPTION A</b> \$22.00	<b>OR</b>	<b>OPTION B</b> \$22.00
2 Medium 2-Topping Pizzas & an order of Cheesy Bread		2 Large 1-Topping Pizzas

Order Code: 53300      ORDER ONLINE @ [DOMINOS.CA](http://DOMINOS.CA)      Order Code: 53301

**VICTORIA**  
(250) 405-2888  
4083 Shelbourne Street

Domino's **ZERO CONTACT DELIVERY**

# On April 2, 2021 Lambrick Park Secondary Baseball/Softball Academy Is holding their second 2<sup>nd</sup> Annual Golf Tournament at Bear Mountain

Please consider donating to support this event and our  
Baseball/Softball Academy



## Lambrick Park Secondary School

4139 Torquay Drive, Victoria, B.C. V8N 3L1  
Phone: 250-477-0181 Fax #: 250-477-0143

Website: [www.lambrickpark.sd61.bc.ca](http://www.lambrickpark.sd61.bc.ca)

Email: [lambrickpark@sd61.bc.ca](mailto:lambrickpark@sd61.bc.ca)

Gord Mitchell, Principal

Nancy Archer, Vice Principal

Barry Janzen, Vice Principal

February 11, 2021

To Whom It May Concern:

On April 2, 2021 the Lambrick Park Secondary Baseball/Softball Academy is holding their second annual golf tournament at Bear Mountain.

The goal of our program is to provide a positive and supportive environment of these young athletes to grow in their sport and develop into successful and responsible members in our community. Every dollar raised will go directly towards our student athletes, costs include:

1. Bus transportation and rental of indoor training facilities
2. Analytics and on-field equipment
3. Weight room and gym equipment
4. Ensure no child goes without an opportunity to participate in our Academy program

We are seeking donations or services for our silent auction and/or balloon raffle, we would appreciate your help and support in making this tournament a success. Thank you in advance for consideration and support, it is greatly appreciated.

If you have any questions or would like to make a donation, please do not hesitate to contact, Mitch Davidoff at 778-677-0932 or Leila Sinclair-Wise at 250-213-9816.

Sincerely,

Mitch Davidoff  
Director of Baseball Operations

## The Academy Open Registration



LAMBRICK PARK  
BASEBALL/SOFTBALL ACADEMY  
2nd ANNUAL GOLF TOURNAMENT  
"THE ACADEMY OPEN"  
JOIN US APRIL 2ND  
@ BEAR MOUNTAIN GOLF RESORT (Valley Course)



**8 X HOLE IN ONE CHANCES TO WIN \$10,000**  
**1 X HOLE IN ONE CHANCE TO WIN A CAR!**

**INDIVIDUAL GOLFER - \$150**  
18 HOLES OF GOLF  
GPS GOLF CART INCLUDED  
GOLF BALLS FOR DRIVING RANGE  
BEER & BURGER

**TEAM OF FOUR - \$550**  
4 X 18 HOLES OF GOLF  
2 X GPS GOLF CARTS INCLUDED  
GOLF BALLS FOR DRIVING RANGE  
BEER & BURGER PER GOLFER

**SPONSOR A HOLE - \$1500**  
SPONSORSHIP SIGNAGE AT A HOLE  
PROVIDE ACTIVITY GIVEAWAY OR  
PRODUCT SAMPLE  
4 X 18 HOLES OF GOLF  
2 X GPS GOLF CARTS INCLUDED  
GOLF BALLS FOR DRIVING RANGE  
BEER & BURGER PER GOLFER

\*\*\*Sign up via Bear Mountain Golf  
portal starting mid January\*\*\*  
Link will be added to Academy  
website once live

LIMITED TO 100 GOLFERS ONLY

**JOIN US APRIL 2ND FOR OUR  
2ND ANNUAL ACADEMY GOLF TOURNAMENT!**

Our goal is to support student athletes to achieve their dreams both athletically and academically. The funds raised will enable us to provide quality instruction and opportunity for young people to become responsible, successful and contributing members of our community. Every dollar raised goes directly to student athletes.

**APRIL 2ND TENTATIVE ITINERARY**

8:00AM - GOLF REGISTRATION OPENS/ ONLINE AUCTION OPENS  
8:00AM - DRIVING RANGE OPEN FOR WARMUP  
9:00AM - FIRST TEE TIME (OFF HOLES #1 AND #10)  
12:00PM - LAST TEE TIME (OFF HOLES #1 AND #10)  
8:00PM ONLINE AUCTION CLOSES

\*\*\*BEER AND BURGER WILL BE SERVED AT HOLE #10\*\*\*

Participants of this event are eligible to a 15% guest room discount based on availability here at the Westin Bear Mountain for the April 2nd date

More questions? Email us at [mdavidoff@sd61.bc.ca](mailto:mdavidoff@sd61.bc.ca) [www.diamondforexcellence.ca](http://www.diamondforexcellence.ca)

## **LAMPAC NEWS:**

LAMPAC Zoom on Wednesday March 3<sup>rd</sup> at 7:00

<https://gvsd61.zoom.us/j/65926865489?pwd=SIJ1T2xZOExkS3A2QkxuK3VENjgzZz09>

Thrifty Foods **SMILE CARDS** are available for pick up in the Lambrick Park office.

Thank you so much to everyone who has contributed to the donation drive. We are continuing to accept donations under the "Make A Donation" tab on the school website.

Please make sure to select Lambrick Park Secondary-PAC [Make A Donation](#).

---

## **CAREER CENTER:**

### **CAREER CENTER NEWS & EVENTS**

---

## **LIBRARY NEWS!**

### **LAMBRICK PARK LIBRARY**

[TWITTER.com/SelenaJensen61](https://twitter.com/SelenaJensen61)

---