



Lambrick Park Secondary School

4139 Torquay Drive, Victoria, B.C. V8N 3L1
Phone: 250-477-0181 Fax #: 250-477-0143

Website: www.lambrickpark.sd61.bc.ca

Email: lambrickpark@sd61.bc.ca

Gord Mitchell, Principal

Melanie Paas, Vice Principal

Barry Janzen, Vice Principal

DAILY EVENTS – check [DAILY ANNOUNCEMENTS](#)

KEEP UP TO DATE WITH LP INSTAGRAM - [LAMBRICK PARK INSTAGRAM](#)

UPCOMING LP EVENTS: [Updated: Daily Health Check Lists](#)

JANUARY 24 – 28: [Numeracy/Literacy Assessment January Schedule](#)

JANUARY 31-FEBRUARY 4: [Black Press's Virtual Career & Post Secondary Education Event](#)

To all LP Families,

Next week is the last week of classes for Semester 1 courses.

For everyone's understand and planning for after next week:

Monday Jan 24 th :	Final Day of regular Scheduled Classes
Tuesday Jan 25 th : A Block (9 to 11:30am)	C Block (12:00 to 2:30pm)
Wednesday Jan 26 th : B Block (9 to 11:30am)	D Block (12:00 to 2:30pm)
Thursday Jan 27 th :	Completion Day
(no classes, but supported work tie for students to finish up any Semester 1 work for marks)	
Friday Jan 28 th :	Turn Around Day (no classes)

Many students will be completing the Numeracy 10, Literacy 10, or Literacy 12 Assessments during that final week of January. Resource Links for Provincial Assessments:

[Grade 10 Numeracy Assessment](#)

[Grade 10 Literacy Assessment](#)

[Grade 12 Literacy Assessment](#)

We do want to thank the students and families for their support as we shifted gears this week yet again.

Fewer students are forgetting masks, more students are wearing masks, and overall kids are not congregating as much as they had prior to Winter Break. Staff are aware that these shifts are not easy on our students, and we really appreciate them following our new protocols.

Attached is a link for updated Daily Health Checks for students.

UPDATED: DAILY HEALTH CHECK LISTS

Have a good weekend

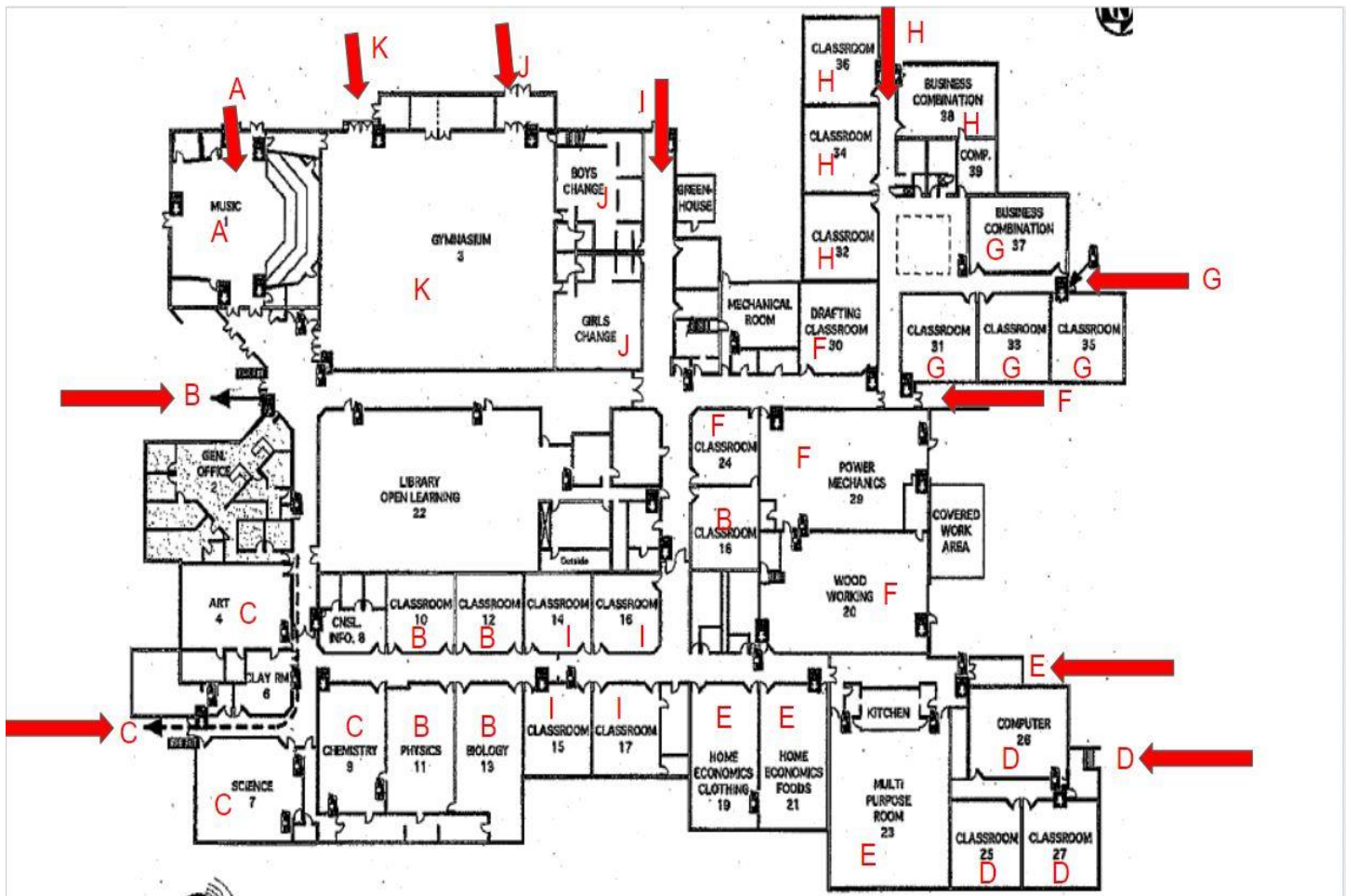
Gord Mitchell

Principal, Lambrick Park Secondary

2021-2022 LPSS Timetable

	Monday	Tuesday	Wednesday	Thursday		Friday
8:55 10:15	A	B	A	B	8:55 9:45	A
10:20- 11:40	B	A	B	A	9:50- 10:40	B
11:40- 12:10	Lunch	Lunch	Lunch	Lunch	10:40 11:20	Lunch
12:15- 1:35	C	D	C	D	11:20- 12:10	C
1:40- 3:00	D	C	D	C	12:15- 1:05	D
					1:10 2:10	Learning Support

Expanded Entrances Map



CAREER CENTER NEWS:

Please see the attached flyer and visit the following website:

Black Press's Virtual Career & Post Secondary Education Event



January 2022 Snapshot [Impact of Social Media on Teens](#)

